

MATCH LINE. SEE FIGURE SG-2

AERIAL FLIGHT DATE: JUNE 2018

DRAFT
 This is a conceptual-level graphic created for planning and discussion purposes only. It is not intended for use in PD&E, Design or Construction

LEGEND

- ROADWAY WIDENING
- CONCRETE SIDEWALK/ TRAFFIC SEPARATOR
- EXISTING R/W
- EXISTING PARCEL LINE
- EXISTING SIGN TO REMAIN
- EXISTING SIGN TO BE REMOVED
- EXISTING SIGN TO BE RELOCATED
- PROPOSED SIGN
- PROPOSED TRAFFIC SIGNAL
- EXISTING SIGN TO REMAIN
- EXISTING SIGN TO BE REMOVED
- EXISTING SIGN TO BE RELOCATED

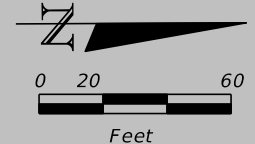


**I-275 at 31st STREET SOUTH
 INTERCHANGE OPERATIONAL ANALYSIS REPORT (IOAR)
 FPID 254677-1-52-33**

I-275 AT 31st STREET SOUTH
 INTERCHANGE IMPROVEMENT

PROPOSED SIGNAGE CONCEPT
 FIGURE 6-4

7/11/2019 10:00:00 AM T:\CADD\IE9Y2420\1700CADD\259122_1_12_13roadway\31stStreet_1275Ramp\PLANS\G01.dgn



MATCH LINE. SEE FIGURE SG-1

MATCH LINE. SEE FIGURE SG-3

AERIAL FLIGHT DATE: JUNE 2018

DRAFT
 This is a conceptual-level graphic created for planning and discussion purposes only. It is not intended for use in PD&E, Design or Construction

LEGEND

- EXISTING L/A RIGHT-OF-WAY
- EXISTING RW
- EXISTING PARCEL LINE
- PROPOSED TRAFFIC SIGNAL
- PROPOSED SIGN
- EXISTING SIGN TO REMAIN
- EXISTING SIGN TO BE REMOVED
- EXISTING SIGN TO BE RELOCATED



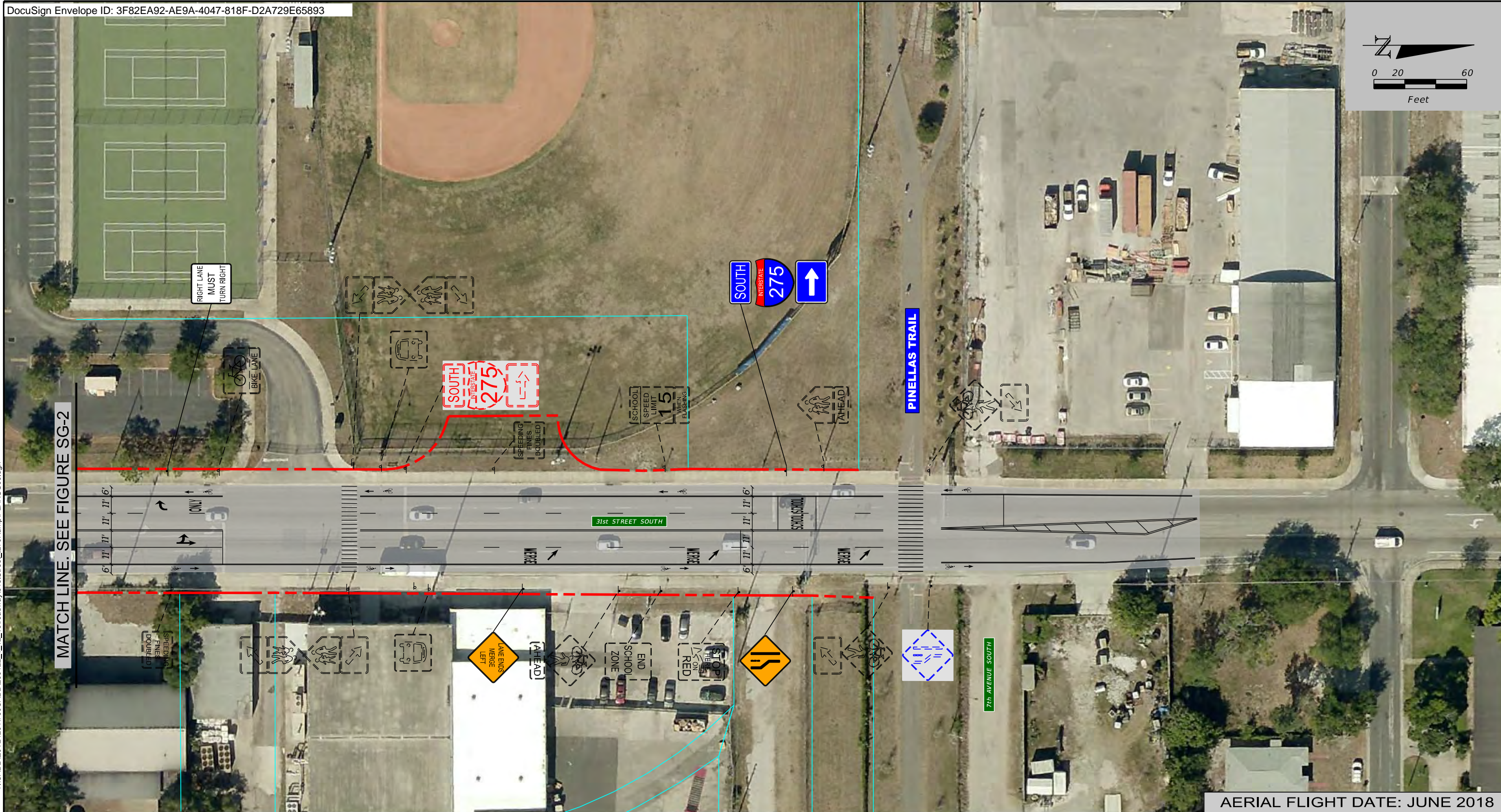
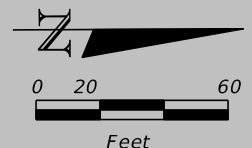
**I-275 at 31st STREET SOUTH
 INTERCHANGE OPERATIONAL ANALYSIS REPORT (IOAR)
 FPID 254677-1-52-33**

I-275 AT 31st STREET SOUTH
 INTERCHANGE IMPROVEMENT

PROPOSED SIGNAGE CONCEPT
 FIGURE 6-5

T:\CADD\IE9Y2420\1700CADD\259122_1_12_13\roadway\31stStreet_1275Ramp\PLANS\G02.dgn

7/11/2019 RodereSR Default



AERIAL FLIGHT DATE: JUNE 2018

DRAFT
 This is a conceptual-level graphic created for planning and discussion purposes only. It is not intended for use in PD&E, Design or Construction

LEGEND

- ROADWAY WIDENING
- CONCRETE SIDEWALK/ TRAFFIC SEPARATOR
- EXISTING R/W
- EXISTING PARCEL LINE
- EXISTING L/A RIGHT-OF-WAY
- PROPOSED TRAFFIC SIGNAL
- PROPOSED SIGN
- EXISTING SIGN TO REMAIN
- EXISTING SIGN TO BE REMOVED
- EXISTING SIGN TO BE RELOCATED



I-275 at 31st STREET SOUTH
 INTERCHANGE OPERATIONAL ANALYSIS REPORT (IOAR)
 FPID 254677-1-52-33

I-275 AT 31st STREET SOUTH
 INTERCHANGE IMPROVEMENT

PROPOSED SIGNAGE CONCEPT
 FIGURE 6-6

T:\CADD\IE9Y2420\1700CADD\259122_1_12_13\roadway\31stStreet_1275Ramp\PLANS\G03.dgn

7/11/2019 RodereSR Default